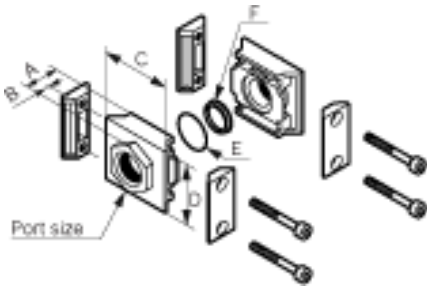
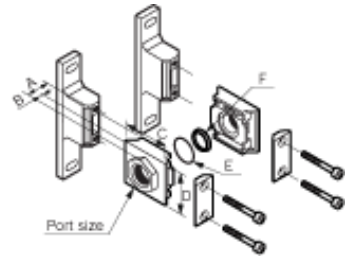


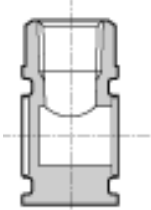
CKD FRL Basic Components Chart



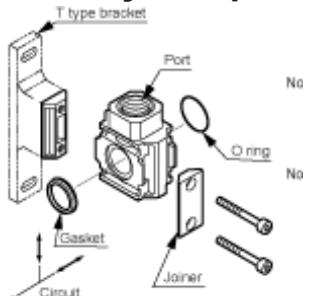
**A100-(6,8,10)-W
Straight End Plate Kit**



**A100-(6,8,10)-W-B11W
Straight end Plate Kit**



**A101-(6,8,10)-W- B11W
90° entry end port**



**D101-(6,8,10)-W-B11W
Distributor Block**



V1000 Shut Off

1000 Series Components Options

**Shut Off
Valve**

Filter

Regulator

Lubricator

A100-(6,8,10)-W end plate port set (1/8, 1/4, or 3/8 ports)

***B110-W Wall mount Joiner Plate**

***C1000-J100-W Plain Joiner plate**

***D101-00-(6 or 8)-W-B11W 1/8 or 1/4 RPT Dist Block**

V1000-(6,8)-W Rpt Manual shut off valve(1/8 or 1/4 ports)

***B110-W Wall mount Joiner Plate**

***C1000-J100-W Plain Joiner plate**

***D101-00-(6 or 8)-W-B11W 1/8 or 1/4 RPT Dist Block**

F1000-(8,10)-W Filter(1/8 or 1/4 ports)

***B110-W Wall mount Joiner Plate**

***C1000-J100-W Plain Joiner plate**

***D101-00-(6 or 8)-W-B11W 1/8 or 1/4 RPT Dist Block**

R1000-(6,8)-W Regulator (1/8 or 1/4 ports)

***B110-W Wall mount Joiner Plate**

***C1000-J100-W Plain Joiner plate**

***D101-00-(6 or 8)-W-B11W 1/8 or 1/4 RPT Dist Block**

L1000-(6,8)-W Lubricator(1/8 or 1/4 ports)

***B110-W Wall mount Joiner Plate**

***C1000-J100-W Plain Joiner plate**

***D101-00-(6 or 8)-W-B11W 1/8 or 1/4 RPT Dist Block**

A100-(6,8,10)-W end plate port set (1/8, 1/4, or 3/8 ports)

*** = select option for this station**

Add after the port code for:
Nothing = Rpt or BSPT ports

"N" = NPT ports

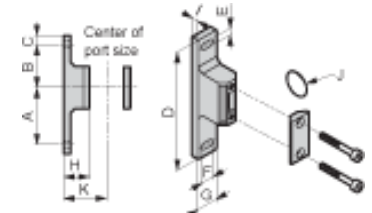
"G" = BSPP ports

Example:

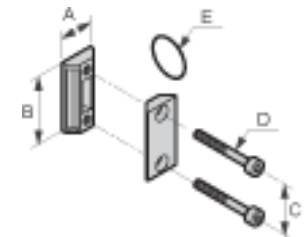
F1000-6-W 1/8 Rpt Filter

F1000-8N-W 1/4" NPT Filter

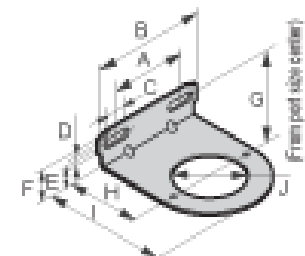
F1000-8G-W 1/4 BSPP Filter



B110-W



C1000-J100-W



B130